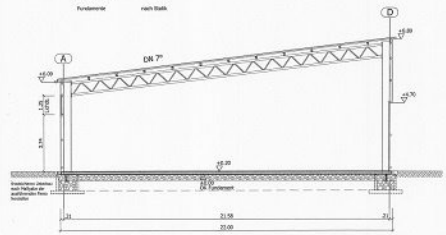
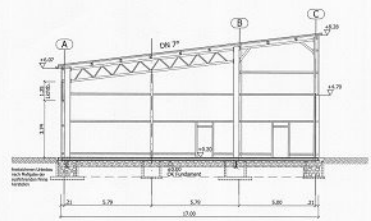


Grundriss

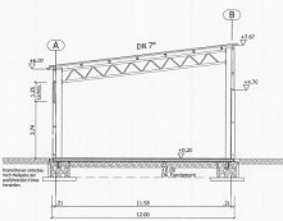
- Legende:
- Dachstuhldeckung: Stahlblechdecken 60 mm Eichenholz, KVL, 800x Lagerbohlen, PV-Isolier
 - Balkendeckel: Stahlprofilen nach Stahl
 - Wandbeband: Stahlblechdecken 60 mm Eichenholz, 10x 1002 galvanneht
 - Wandverband: nach Stahl
 - Funkelbohle: nach Stahl



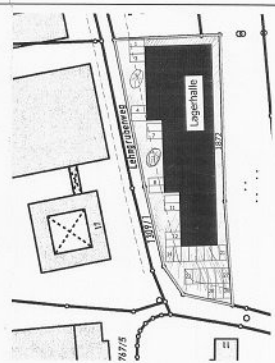
Schnitt A - A



Schnitt B - B



Schnitt C - C



Stellplätze M 1:500